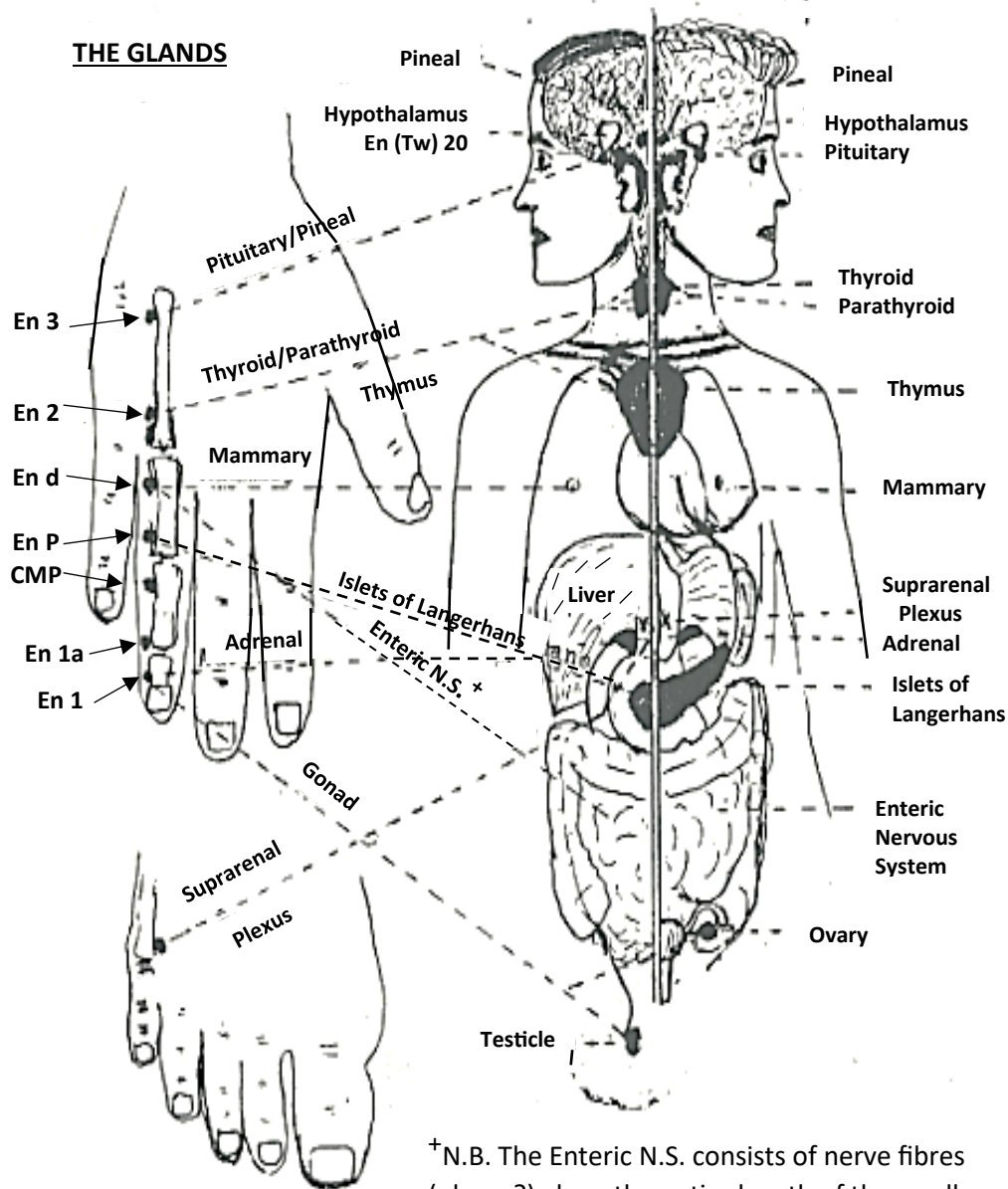


## The ENDOCRINE SYSTEM and Related Permeable Points on the HANDS

FEET & HEAD according to R. Voll, M.D. Additions + F. J. Fox

© F.J. Fox, 21 Halewood Rd. Liverpool L25 3PH 1 Dec. 1986



+N.B. The Enteric N.S. consists of nerve fibres (plexus?) along the entire length of the small intestine. It controls peristalsis and the absorption of nutrients.

### Notes

The Pineal gland may influence pituitary/medullary adrenal/gonad function.

The hypothalamus is the main regulator of the endocrine system via the pituitary gland. It secretes release hormone for the anterior lobe, and control hormones for the posterior lobe of the pituitary.

The Pituitary secretes hormones as follows:

#### Anterior lobe:

Growth hormone (GH) (Somatotropin) → Liver  
 Adrenocorticotrophin (ACTH)  
 Thyrotrophin (Thyroid stimulating -TSH)  
 Prolactin (luteotrophic -LTH)  
 Follicle stimulating hormone (FSH)  
 Interstitial cell stimulating (ICSH)  
 Melanocyte stimulating (MSH)

#### Posterior lobe:

Vasopressin (Anti-diuretic: ADR)  
 Oxytocin

#### The Thyroid gland:

Thyroxine  
 Calcitonin

#### The Parathyroid glands:

Parathormone

#### The Thymus:

T hormone to produce T cells

#### The Islets of Langerhans produce:

Insulin  
 Glucagon

#### The Adrenal Glands produce:

Adrenaline & Noradrenalin (Medulla)  
 Glucocorticoids (Cortisol)  
 Mineralocorticoids (Aldosterone)  
 Sex hormones: androgens & estrogens

#### The Liver produces: Somatomedins

The testicles produce: androgens (endocrine) / sperms (exocrine)

The ovaries produce: (endocrine) - estrogen / progesterone (exocrine) - ova